

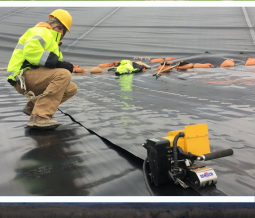


HALLATON

ENVIRONMENTAL LININGS



WE'VE GOT YOU COVERED



AT HALLATON ENVIRONMENTAL LININGS

We're passionate about the environment. Growing up in Maryland, our founder and president, Todd Harman, gained an early appreciation for the Chesapeake Bay and its importance to the ecosystem and the local economy. As a result, Todd chose a career in environmental protection, first working as a geosynthetics sales representative for the mid-Atlantic region and then as a partner with an environmental company in Australia, finally settling back down in Maryland where he started Hallaton Environmental Linings.

With more than 28 years of hands-on experience, Hallaton is recognized as an industry expert in environmental containment systems and the installation of geosynthetics.

Solid Waste Applications

- Landfill New Cells and Closures
- Secondary Containment
- Leachate Management Systems
- Gas Control Systems
- Rain Covers
- Ballasting Systems
- Solar Fields

Agri/Aquacultural Applications

- Fish Hatcheries
- Tank Covers
- Retention Basins
- Secondary Containment
- Evaporation Ponds
- Pond Linings
- Water Reservoirs/Canals
- Barriers
- Silage

Water Storage Applications

- Potable Water Storage
- Reservoir Liners
- Floating Covers
- Slope Lining
- Seepage Control

Energy/Power Applications

- Waste Containment
- Ash Disposal
- Fly Ash Service Pond
- Spray Field
- Coal Storage Pad
- Settling Pond
- CCR Impoundments
- Drying Beds

Water Treatment Applications

- Waste Water Lagoons
- Tank Lining/Testing
- Secondary Containment
- Storm Water Containment
- Reservoir Liners
- Aeration Lagoons
- Settling Basin and Ponds
- Recirculation Ponds
- Digester Lagoons and Covers
- Floating covers

Recreational Applications

- Recreational Facilities
- Residential Landscaping
- Ornamental Ponds
- Golf Courses
- Parks & Resorts
- Fountains

Mining Applications

- Evaporations Ponds
- Heap Leach Pad Liner Systems
- Tailings Impoundment Liner Systems
- Ground Stabilization
- Erosion Control
- Remediation of Mine Tailings
- Mine Closures

Oil & Gas Applications

- Reserve Pits
- Secondary Containment
- Freshwater Frac Pits
- Water Impoundment
- Flowback Pond Liners
- Well Pad Containment
- Natural Gas Brine Water Containment

Specialty Applications

- Secondary Containment
- Polyurea Spray Lining
- Tank Piping/Testing
- Leak Detection & Repair
- Roadways
- Recreational Facilities
- Vapor Barriers
- Concrete Liners

HALLATON HAS GREAT PEOPLE

With more than 150 employees nationwide, Hallaton crews contain many of the industry's top technicians with extensive experience installing geosynthetics. We've completed thousands of projects for public and privately held companies, large corporations, and government municipalities at the local, state and federal levels. Our crews have a reputation for knowledge, precision and reliability.

We work together as a TEAM

We conduct our business with INTEGRITY

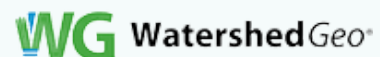
We pride ourselves on PERFORMANCE

We never stop focusing on SAFETY!



AND PARTNERSHIPS

As an Approved Installation Contractor (AIC) of the International Association of Geosynthetics Installers (IAGI), Hallaton has solid partnerships and excellent buying power with the industry's leading suppliers. We can guide our customers to the right products for their needs, knowing anything we install is backed entirely by the companies and brands we represent.



COMPANY PROFILE

Key Contacts

Todd Harman, President
Kennedy Garber, V.P. Construction
Courtney McGee, Sales Manager
Justin Harward, Operations Manager
Lawrence Almengor, Controller

Total Employees

150+

Total Crews

10-12

Training

Extensive training is a top priority. We provide in-house and manufacturer-based training programs for new installers and technicians. We provide IAGI welding certification programs, Demtech welding equipment training, operation/maintenance training for industrial sewing machines and a full-scope safety training program.

Certifications

AIC, CWT, Master Seamers, OSHA's 10- and 30-hr, Hazwoper, QA/QC, CPR

Geosynthetics

Geomembrane (HDPE, LLDPE, EPDM, PVC, PP, RPE, XR3, XR5, CSPE), Geosynthetic Clay Lining (GCL), Geotextile, Geocomposite, Geonet, Geogrid, Geocells, HDPE Pipe, Polyurea/spray-on liquid membranes, Ballasting Systems/Anchor Down, Foundation Drainboard, Vapor Barriers, Floating Covers, Rain Covers, and Specialty Linings

Quantity Installed

Over 1 Billion SF

Safety

Comprehensive in-house safety program includes: new hire orientation/training, mandatory drug testing, HASP, HazCom, SOP's, hearing conservation, Covid awareness/protection, PPE usage, OSHA's 10- and 30-hr, Hazwoper / confined space course, first aid, CPR, daily site safety meetings, quarterly company safety meetings. Field PPE attire: long pants, sleeved shirts, steel toe boots, safety vest, leather gloves and safety glasses

