



PROJECT PROFILE

BEL AIR WATER IMPOUNDMENT

Impoundment

OWNER	Maryland American Water Co.
SIZE	13 acres; 90-million-gallon capacity
LOCATION	Bel Air, Maryland
DESIGN	Raw Water Storage Impoundment Bituminous Geomembrane



CONSTRAINTS

Local and National
Regulations

Stringent Safety
Concerns

First-Time Install
of Product Type

Difficult Weather
Conditions

BACKGROUND

The Maryland American Water Company provides potable drinking water for citizens in the local town of Bel Air, Maryland. This Bel Air impoundment can store 90 million gallons of raw water (a 100-day supply). This impoundment was constructed in 2018 and will go into full service in 2019. The newly constructed impoundment offers a reliable, safe, and environmentally-sound long-term solution to the water needs of Bel Air and other areas of Harford County, Maryland.

SOLUTION

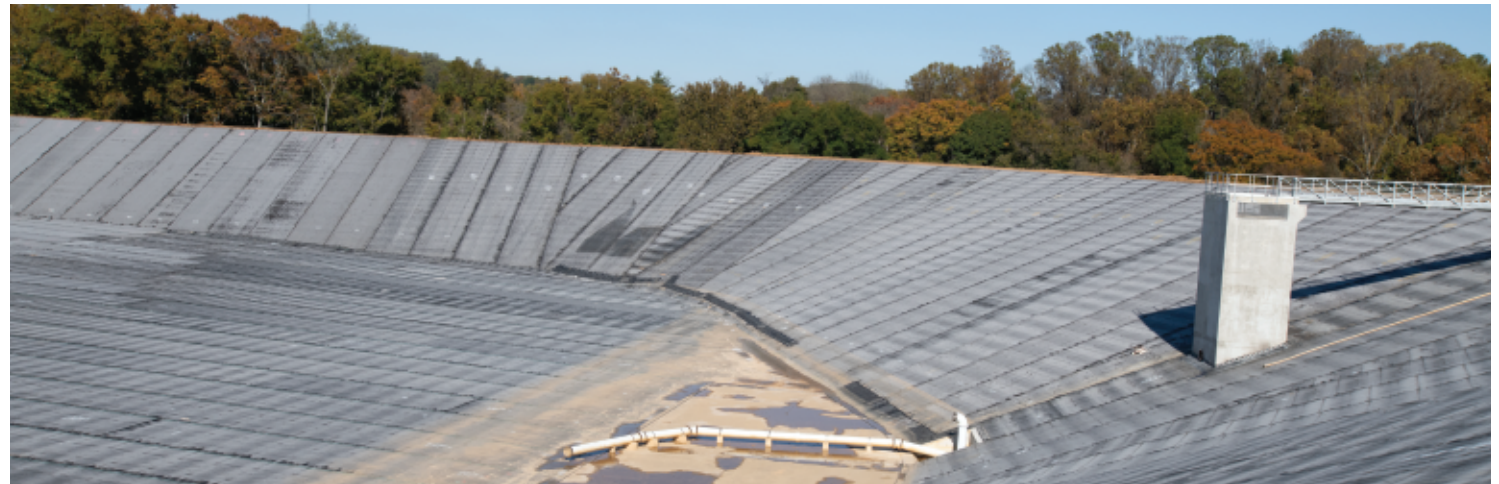
Hallaton Environmental Linings was contracted to provide and install a bituminous geomembrane. Hallaton installed the specified geomembrane liner material as manufactured by Axter Coletanche. Coletanche ES4 HFA is a bituminous geomembrane with a thickness of 220 mils. It is comprised of a geotextile with long polyester fiber of 11.8 oz/yd², combined with a layer of glass fleece, and impregnated with an elastomeric bitumen. Hallaton is the first geosynthetics liner installer to install the ES4 HFA bituminous liner in the eastern United States. Hallaton's expertise in the installation of many types of geosynthetics materials allowed our company to successfully complete this project.

For more information visit the Hallaton Environmental Linings website at www.hallaton.com.



1206 SPARKS RD.
SPARKS, MD 21152
410-583-7700





1206 SPARKS RD.
SPARKS, MD 21152
410-583-7700

